



**WEAVER MOUNTAINS
FIREWISE COMMUNITIES**

WEAVER MOUNTAINS COERT
COMMUNITY OUTREACH AND EMERGENCY RESPONSE TEAM

PEEPLS VALLEY FIRE & MEDICAL DISTRICT

Peoples Valley, Arizona 86332

www.peoplesvalleyfire.org

928-427-9400

Duty Determination Integrity

February 18, 2026 Board of Directors Meeting Packet

Peoples Valley Fire District
PO Box 936, Yarnell, AZ 85362
17275 W. Burning Bush Drive, Peoples Valley, AZ 86332
BOARD OF DIRECTORS' MEETING AGENDA

Notice of Regular Meeting
Historic Peoples Valley School
18205 S. Highway 89, Peoples Valley, AZ
Wednesday, February 18, 2026, at 10:00 AM

The public will have physical access to the meeting facility at 9:45 AM

Pursuant to Arizona Revised Statutes A.R.S. § 38-431.02, notice is hereby given to the members of the Governing Board and the General Public that the Peoples Valley Fire District Governing Board will hold a meeting on the date and time listed above at **18205 S. Highway 89, Peoples Valley, AZ**. The topics listed and any variables thereto will be subject to Board consideration, discussion, approval, or other action. Copies of the Agenda and Minutes are available on peoplesvalleyfire.org. If any person with a disability requires an accommodation, please notify the Peoples Valley Fire District in advance of the scheduled meeting time. The Board may vote to go into executive session on any agenda item pursuant to A.R.S. § 38-431.03(A)(3) for legal advice with the district's attorney on matters as outlined in the agenda item. Members may participate in all or a portion of the meeting by telephone. The Governing Board may consider any item on this agenda in any order and at any time during the meeting.

1. CALL TO ORDER

2. PLEDGE OF ALLEGIANCE

3. ROLL CALL OF BOARD: Neil Rifenkark, Phil Lobeck, Wayne Keller, Scott Mayer, Gregg Carr Members may participate in all or a portion of the meeting electronically.

4. APPROVAL OF MINUTES: Regular Session 01-20-2026

5. CALL TO THE PUBLIC

Consideration and discussion of comments and complaints from the public: Those wishing to address the Peoples Valley Fire District Board need not request permission in advance. The Fire District Board is not permitted to discuss or take action on any item raised in the call to the public. However, individual Board members may be permitted to respond to criticism directed at them. Otherwise, the Board may direct that staff review the matter or that the matter be placed on a future agenda. The Fire District Board cannot discuss or take legal action on any issue raised during the Call to the Public due to restrictions of the Open Meeting Law. Participants shall follow guidelines for good conduct and time constraints per the Fire District Policy on meeting procedures.

6. REPORTS AND CORRESPONDENCE

- A. Fire Chief's Report
- B. Duty Officers' Reports
- C. Fire Prevention and Safety Officer's Report
- D. Report from Weaver Mountains Firewise Communities Coordinators
- E. Correspondence received by the Board of Directors
- F. Auxiliary Report

7. PUBLIC HEARING

- A. Consider recessing the regular meeting to hold a Public Hearing to discuss adjacent annexation requests.
- B. Consider adjourning the Public Hearing and reconvening the Regular Session.

8. BUSINESS and ACTION

- A. Discussion/possible action to approve the January 2026 Financial Report presented by The James Vincent Group.
- B. Discussion/possible action to approve February Warrant Requests.
- C. Discussion/possible action to approve the Chief to appoint a committee to review

district bylaws.

- D. Discussion/possible action to approve the Chief to form a budget workshop committee.
- E. Discussion/possible action to approve a resolution for adjacent annexation requests.
 - 1. Resolution No. 2026-02-18 – 001P
 - 2. Resolution No. 2026-02-18 – 001Q
 - 3. Resolution No. 2026-02-18 – 001R
 - 4. Resolution No. 2026-02-18 – 001S
 - 5. Resolution No. 2026-02-18 – 001T
 - 6. Resolution No. 2026-02-18 – 001U
 - 7. Resolution No. 2026-02-18 – 001V

9. DISCUSSION

- 1. Self-termination of Employee ID 205 (January 19, 2026)
- 2. Employment of Employee ID 222 (February 2, 2026)
- 3. Employment of Employee ID 227 (February 2, 2026)
- 4. Status of the Weaver Mountains Regional Public Safety Facility
- 5. Community meeting hosted at Ruger Ranch
- 6. Station 82 Ruger Ranch
- 7. Yarnell Fire District

10. FUTURE AGENDA ITEMS

- A. New Business Agenda Item Requests for the next regular meeting, workshops, and other meetings.
- B. Upcoming Meeting Date: Next Regular Session – March 18, 2026, at 10:00 AM.

11. ADJOURNMENT

Peoples Valley Fire District, PO Box 936, Yarnell, AZ 85362
17275 W. Burning Bush Drive, Peoples Valley, AZ 86332
BOARD OF DIRECTORS' MEETING and PUBLIC HEARING MINUTES
Location of Meeting Held: Historic Peoples Valley School
18205 S. Highway 89, Peoples Valley, AZ
Tuesday, January 20, 2026, at 10:00 AM

- 1. CALL TO ORDER:** Neil Rifenbark called the meeting to order at 10:00 AM.
- 2. PLEDGE OF ALLEGIANCE:** The pledge was led by Neil Rifenbark.
- 3. ROLL CALL OF BOARD:** Neil Rifenbark, Phil Lobeck, Wayne Keller, Gregg Carr, Scott Mayer (via phone)
- 4. APPROVAL OF MINUTES:** Regular Session 12-17-2025
 - **Wayne Keller** made a motion to approve the 12-17-2025 meeting minutes as amended (add board member names to 7.C.).
 - **Seconded: Gregg Carr**
 - **Ayes: Neil Rifenbark, Wayne Keller, Phil Lobeck, Gregg Carr, Scott Mayer**
 - **Nays: 0**
 - **Abstain: 0**
- 5. CALL TO PUBLIC:** Rose Davis- Does the fire board have a treasurer or do they use an accountant?
Public in attendance: Shawn Bomar, Kelley Paiz, Ray Paiz, Sue Dickerson, Wendy Qualls, Rose Davis
- 6. REPORTS AND CORRESPONDENCE**
 - A. Fire Chief's Report: see website
 - B. Duty Officers' Reports: see website
 - C. Fire Prevention and Safety Officer's Report: see website
 - D. Report from Weaver Mountains Firewise Committee Coordinators: see website
 - E. Correspondence received by the Board of Directors: none
 - F. Auxiliary Report: see website
 - G. Arizona Fire District Association (AFDA) Conference: General discussion on board member requirements and liabilities.
- 7. BUSINESS and ACTION**
 - A. Discussion/possible action to approve the December 2025 Financial Report presented by The James Vincent Group.
 - **Phil Lobeck** made a motion to approve the December 2025 Financial Report presented by the James Vincent Group.
 - **Seconded: Wayne Keller**
 - **Ayes: Neil Rifenbark, Wayne Keller, Scott Mayer, Gregg Carr, Scott Mayer**
 - **Nays: 0**
 - **Abstain: 0**
 - B. Discussion/possible action to approve January Warrant Requests.

- **Neil Rifenkark** made a motion to approve January Warrant Requests.
- **Seconded: Phil Lobeck**
- **Ayes: Neil Rifenkark, Wayne Keller, Phil Lobeck, Scott Mayer, Gregg Carr, Scott Mayer**
- **Nays: 0**
- **Abstain: 0**

8. DISCUSSION

1. Employee ID 208 (January 19, 2026)
2. Status of the Public Safety Facility
3. Community meeting hosted at Ruger Ranch

9. FUTURE AGENDA ITEMS

- A. New Business Agenda Item Requests for the next regular meeting, workshops, and other meetings. Station 82 Ruger Ranch, Yarnell Fire status, update to Bylaws.
- B. Upcoming Meeting Date: Next Regular Session – February 18, 2026, at 10:00 AM.

10. ADJOURNMENT by Neil Rifenkark at 11:20 AM

DRAFT

Chief Shawn Bomar, February 18, 2026 Report

Due to recent measurable precipitation, the wildfire risk remains classified as Moderate. Burn permits may be issued on a highly limited basis.

The construction process for Tender 812 is ongoing. Progress photographs will be uploaded to the PVFD Website.

The Waever Mountains Community Outreach and Emergency Response Team (COERT) development team is progressing. I would like to extend my gratitude to John Richuisa, Dany Schwarz, and Dan Schwoegler for their efforts in establishing this vital initiative. The Yavapai County Board of Supervisors has authorized the transfer of a 2013 Chevrolet Silverado 3500 4X4 and a 2016 Silverado 1500 4X4 to the District. These vehicles will serve as a fundamental component of the COERT logistics program. Preparations are underway for their deployment in March of this year.

I have included the latest floor plan revision for the Weaver Mountains Public Safety Facility. Square footage for each agency has been updated as follows: Shared Use: 2,958; Fire: 10,340; Health: 610; Sheriff: 4,612. This packet includes the FY 26-27 Levy information. Please review for any possible discussion under Correspondence Received. Finally, Captain Paiz is seeking funding for a Type 1 Water Tender for Operations. I hope to report on his progress at the next regularly scheduled Board of Directors meeting.

Duty Officers Report:

Duty Officer Dwiggins has successfully completed the NWGC Editor Trainer Workshop, thereby enhancing our internal Wildland Training and Certification Capabilities. Duty Officer Dany Schwartz has implemented the updated Fingerprint Clearance Card operation and is progressing accordingly.

Incidents:

C SHIFT 1/19 EMS: Effective patient care from on-scene crews with a successful turnover of patient care and transport via Life Line Ambulance (LLA)

B SHIFT 1/21 EMS: Effective patient care from on-scene crews with a successful turnover of patient care and transport via Life Line Ambulance (LLA)

A SHIFT 1/21 EMS: Effective patient care from on-scene crews with a successful turnover of patient care and transport via Life Line Ambulance (LLA)

A SHIFT 1/22 FIRE: ENGINE 812 responded to a possible gas leak; nothing was found.

C SHIFT 1/26 EMS: Effective patient care from on-scene crews with a successful turnover of patient care and transport via Life Line Ambulance (LLA)

B SHIFT 1/30 EMS: Effective patient care from on-scene crews with a successful turnover of patient care and transport via Life Line Ambulance (LLA)

A SHIFT 2/04 EMS: Effective patient care from on-scene crews with a successful turnover of patient care and transport via Life Line Ambulance (LLA)

C SHIFT 2/10 EMS: Effective patient care from on-scene crews with a successful turnover of patient care and transport via Life Line Ambulance (LLA)

A SHIFT 2/11 EMS: Effective patient care from on-scene crews with a successful turnover of patient care and transport via Life Line Ambulance (LLA)

A SHIFT 2/12 EMS: Effective patient care from on-scene crews with a successful turnover of patient care and transport via Life Line Ambulance (LLA)

A SHIFT 2/14 EMS: Effective patient care from on-scene crews with a successful turnover of patient care and transport via Life Line Ambulance (LLA)

Captain Raymond Paiz:

Fire Prevention:

1. Fire Prevention provided a short presentation to Model Creek School students and staff, inviting them to participate in the Dewey Humboldt Don't Get Burned art contest. Winners receive a \$200 dollar prize, as does the winning teacher for that student.
2. Staff have initiated the process to re-survey the Peoples Valley Fire District community fire protection system for improvement of the District's ISO Rating. Multiple components of our system are now scheduled to be re-certified or have been. Components include the community fire department, emergency communications, water supply, and community risk reduction.

Weaver Mountains Firewise® USA Programs:

1. We attended the Yavapai Firewise monthly meeting in Prescott, providing a comprehensive report on Weaver Mountains Firewise Communities activities. We included a report on the progress of the Weaver Mountains Public Safety Facility. We also introduced the new officers of the Wilhoit Firewise team.
2. We are preparing to attend and participate in a number of upcoming events related to fire prevention and Firewise programs.

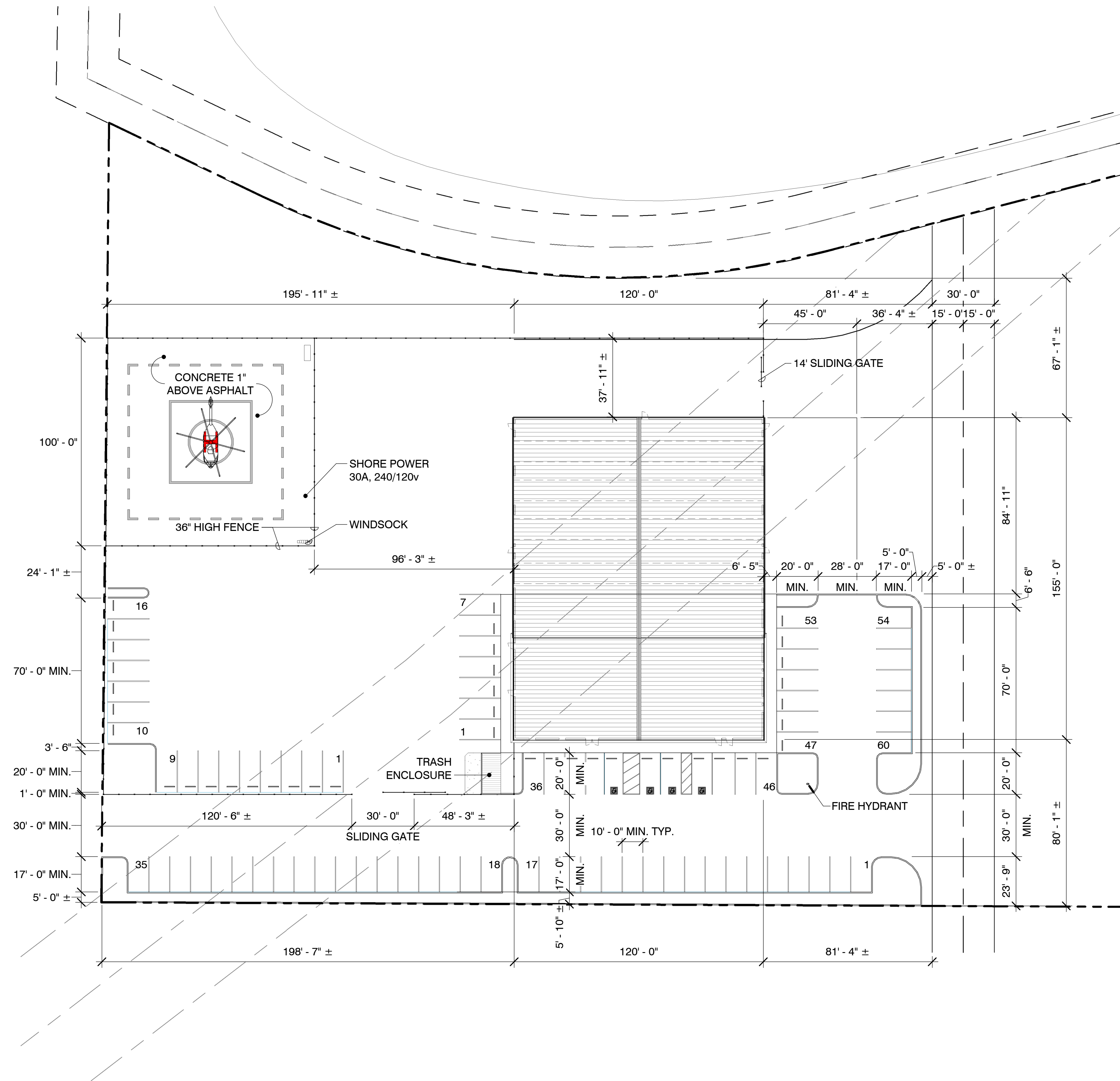
Peoples Valley/Ruger Ranch Firewise® Community Report:

1. Attended the Ruger Ranch HOA meeting with Chief and Lori Bomar.
2. As a result of current mitigation activity by our wildland Division and Fuels Crews, we have garnered an increase in interest and requests for fuels mitigation from property owners. We are assessing and scheduling as appropriate. An interesting note: county code enforcement and insurance inspectors have noticed our work as well. This is partially driving the increased interest, as reported by homeowners.

SITE PLAN

WEAVER MOUNTAINS REGIONAL PUBLIC SAFETY FACILITY

Peeples Valley, AZ 86332



1 ARCHITECTURAL SITE PLAN
1" = 30'-0" Re: A/P.4

T25-068
SK-9
12/10/2025
2/17/2026
3:06:13 PM



(928) 615-1700 Tel 3967 E. 41st Place Yuma, AZ 85365



Sheet Number

P.1

1st STORY-FLOOR PLAN

WEAVER MOUNTAINS REGIONAL PUBLIC SAFETY FACILITY

Peeples Valley, AZ 86332

COMMON AREA

NO.	SPACE NAME	AREA	CEILING HEIGHT	COMMENTS
101	LOBBY	296 SF	8'-0"	MAIN ENTRANCE DOOR: SECURE KEY-CARD SWIPE.
102	RECEPTION	66 SF	8'-0"	
103	CONFERENCE ROOM	962 SF	8'-0"	
104	SECURE DOOR	85 SF	8'-0"	DOOR INTO S.O.: SECURE KEY-CARD SWIPE.
105	HALLWAY	280 SF	8'-0"	
106	RR 1	60 SF	8'-0"	
107	RR 2	60 SF	8'-0"	
108	KITCHEN	481 SF	8'-0"	
109	JANITORS	38 SF	8'-0"	
110	ELECTRICAL RM.	25 SF	8'-0"	
111	PT ROOM	502 SF	8'-0"	
112	STORAGE	44 SF	8'-0"	
113	RESTROOM	59 SF	8'-0"	

FIRE DEPARTMENT

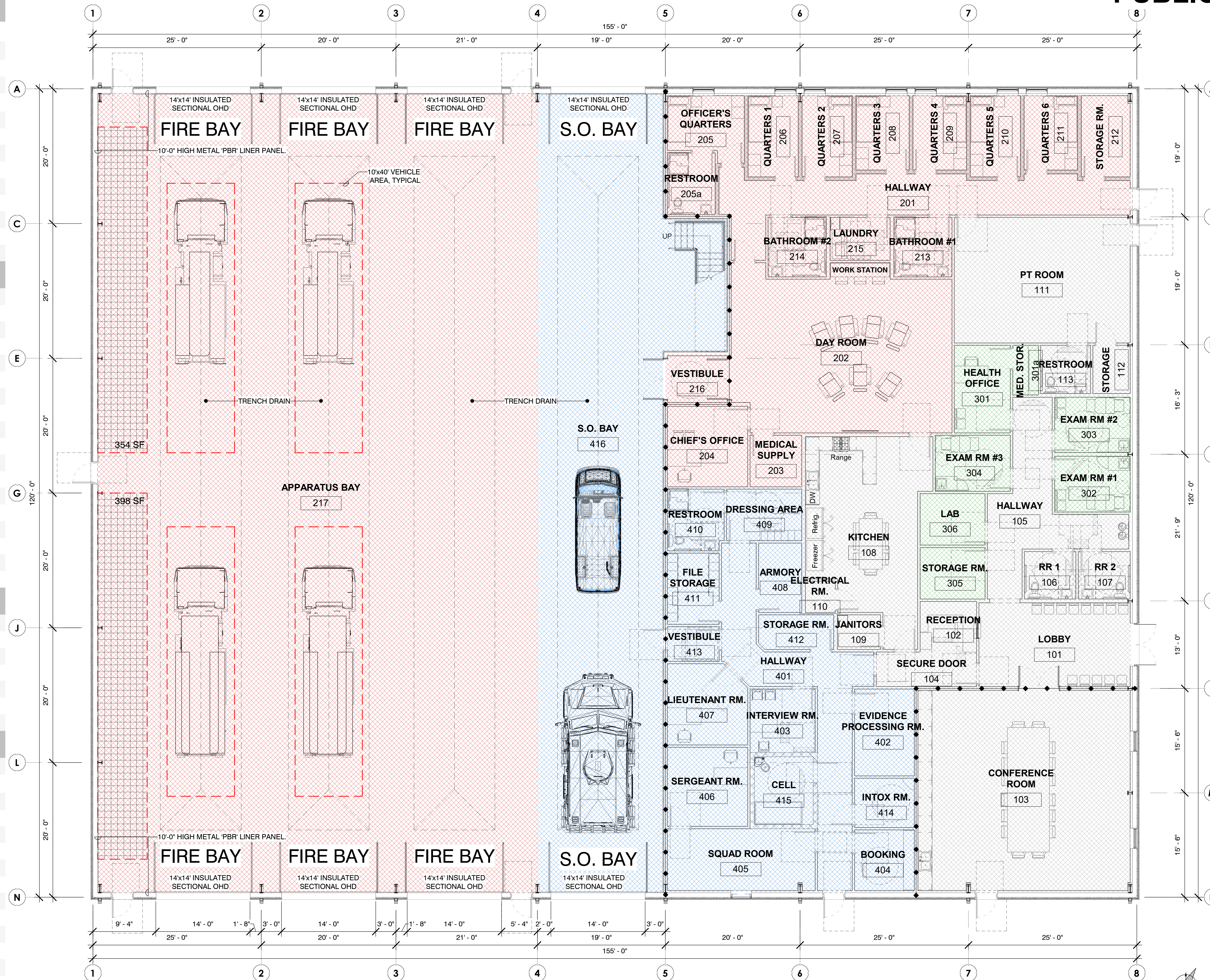
201	HALLWAY	414 SF	8'-0"	
202	DAY ROOM	796 SF	8'-0"	
203	MEDICAL SUPPLY	65 SF	8'-0"	
204	CHIEF'S OFFICE	154 SF	8'-0"	
205	OFFICER'S QUARTERS	111 SF	8'-0"	20 MINUTE RATED DOOR
205a	RESTROOM	73 SF	8'-0"	
206	QUARTERS 1	100 SF	8'-0"	20 MINUTE RATED DOOR
207	QUARTERS 2	100 SF	8'-0"	20 MINUTE RATED DOOR
208	QUARTERS 3	98 SF	8'-0"	20 MINUTE RATED DOOR
209	QUARTERS 4	98 SF	8'-0"	20 MINUTE RATED DOOR
210	QUARTERS 5	100 SF	8'-0"	20 MINUTE RATED DOOR
211	QUARTERS 6	98 SF	8'-0"	20 MINUTE RATED DOOR
212	STORAGE RM.	95 SF	8'-0"	20 MINUTE RATED DOOR
213	BATHROOM #1	83 SF	8'-0"	
214	BATHROOM #2	83 SF	8'-0"	
215	LAUNDRY	64 SF	8'-0"	
216	VESTIBULE	71 SF	8'-0"	
217	APPARATUS BAY	7,737 SF	24'-0"	

HEALTH DEPARTMENT

301	HEALTH OFFICE	116 SF	8'-0"	
301a	MED. STOR.	32 SF	8'-0"	
302	EXAM RM #1	101 SF	8'-0"	
303	EXAM RM #2	101 SF	8'-0"	
304	EXAM RM #3	100 SF	8'-0"	
305	STORAGE RM.	80 SF	8'-0"	
306	LAB	80 SF	8'-0"	

SHERIFF'S DEPARTMENT

401	HALLWAY	375 SF	8'-0"	
402	EVIDENCE PROCESSING RM.	124 SF	8'-0"	
403	INTERVIEW RM.	99 SF	8'-0"	
404	BOOKING	88 SF	8'-0"	
405	SQUAD ROOM	214 SF	8'-0"	
406	SERGEANT RM.	150 SF	8'-0"	
407	LIEUTENANT RM.	147 SF	8'-0"	
408	ARMORY	73 SF	8'-0"	
409	DRESSING AREA	93 SF	8'-0"	
410	RESTROOM	83 SF	8'-0"	
411	FILE STORAGE	89 SF	8'-0"	
412	STORAGE RM.	63 SF	8'-0"	
413	VESTIBULE	45 SF	8'-0"	
414	INTOX RM.	72 SF	8'-0"	
415	CELL	100 SF	10'-0"	
416	S.O. BAY	2,396 SF	24'-0"	



DEPARTMENT LEGEND

- COMMON AREA
- FIRE DEPARTMENT
- HEALTH DEPARTMENT
- SHERIFF'S DEPARTMENT

1st STORY-FLOOR PLAN

1/8" = 1'-0" Re: A / P.4

BUILDING CODE	
DISCIPLINE	CODE
Plumbing	2024 International Plumbing Code (IPC)
Building	2024 International Building Code (IBC)
Existing Building	2024 International Existing Building Code (IEBC)
Mechanical	2024 International Mechanical Code (IMC)
Fire	2018 International Fire Code (IFC)
Energy Conservation (Commercial)	2012 International Energy Conservation Code (IECC)
Fuel Gas	2024 International Fuel Gas Code (IFGC)

T25-068
SK-9
12/10/2025
2/17/2026
3:06:20 PM



(928) 615-1700 Tel 3967 E. 41st Place Yuma, AZ 85365



Sheet Number

P.2

2nd STORY-FLOOR PLAN

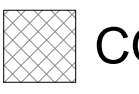



WEAVER MOUNTAINS REGIONAL PUBLIC SAFETY FACILITY

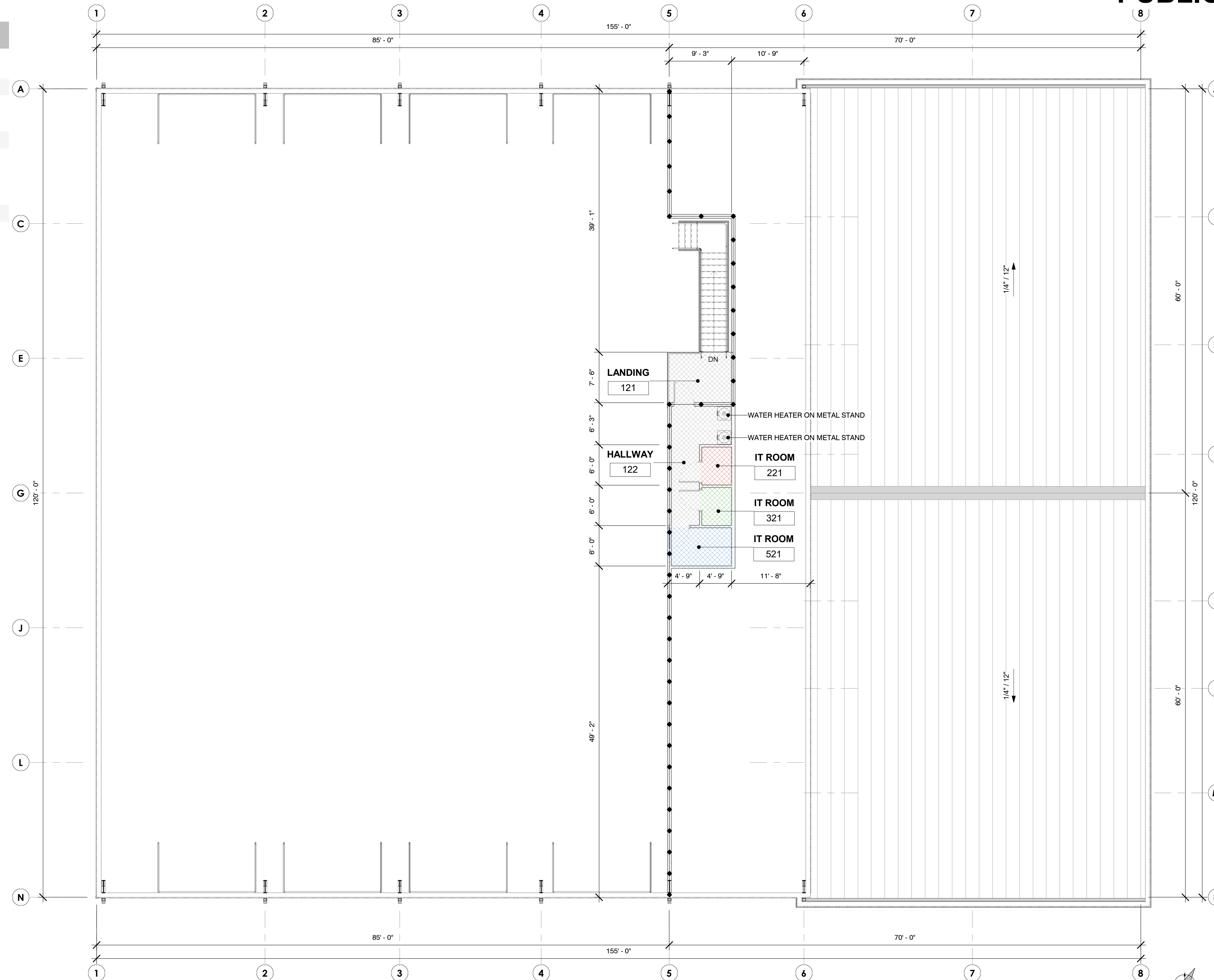
Peeples Valley, AZ 86332

ROOM SCHEDULE

NO.	SPACE NAME	AREA	CEILING HEIGHT	COMMENTS
COMMON AREA				
121	LANDING	76 SF	8' - 0"	
122	HALLWAY	114 SF	8' - 0"	
FIRE DEPARTMENT				
221	IT ROOM	29 SF	8' - 0"	
HEALTH DEPARTMENT				
321	IT ROOM	29 SF	8' - 0"	
SHERIFF'S DEPARTMENT				
521	IT ROOM	57 SF	8' - 0"	

DEPARTMENT LEGEND

-  COMMON AREA
-  FIRE DEPARTMENT
-  HEALTH DEPARTMENT
-  SHERIFF'S DEPARTMENT



1 2nd STORY-FLOOR
1/8" = 1'-0" Re: A/P.4

T25-068
SK-9
12/10/2025
2/17/2026
3:06:22 PM



(928) 615-1700 Tel 3967 E. 41st Place Yuma, AZ 85365



Sheet Number

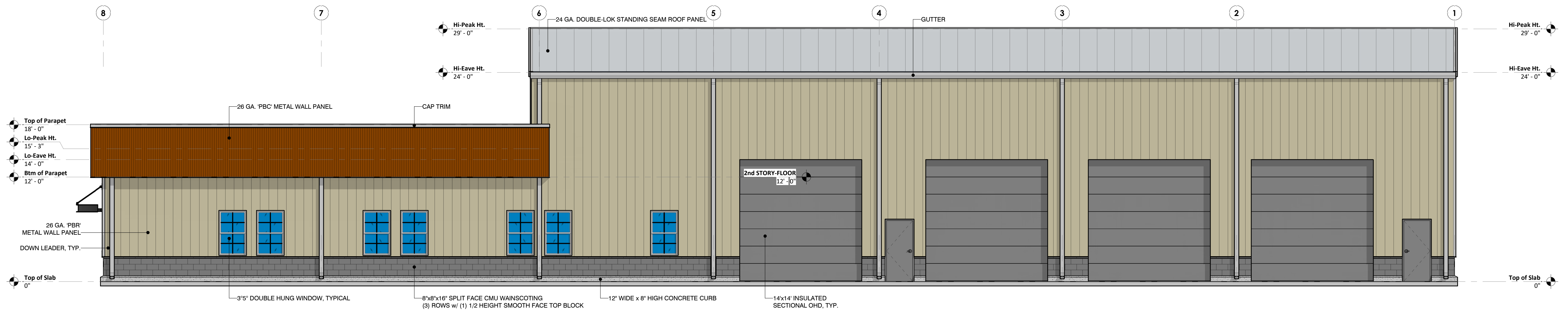
P.3

T41 ARCHITECTS, LLC ASSUMES NO RESPONSIBILITY OR LIABILITY FOR THE CONSTRUCTION OR SUPERVISION OF THE WORK DESCRIBED WITHIN THESE DRAWINGS AND/OR SPECIFICATIONS. ANY OMISSIONS OR DISCREPANCIES IN, OR REVISIONS TO, THE DRAWING AND/OR SPECIFICATIONS MUST BE BROUGHT TO THE ATTENTION OF T41 ARCHITECTS, LLC. FOR REVIEW AND RESOLUTION PRIOR TO PROCEEDING WITH CONSTRUCTION. THE IDEAS, DESIGNS AND ARRANGEMENTS REPRESENTED BY THESE DRAWINGS AND SPECIFICATIONS ARE, AND SHALL REMAIN, THE PROPERTY OF T41 ARCHITECTS, LLC. NO PART SHALL BE COPIED, DISCLOSED TO OTHERS OR USED IN CONNECTION WITH ANY WORK OR PROJECT OTHER THAN THE WORK SPECIFIED HEREIN WITHOUT THE EXPRESS WRITTEN CONSENT OF T41 ARCHITECTS, LLC. © COPYRIGHTED 2023. ALL RIGHTS RESERVED.

EXTERIOR ELEVATIONS

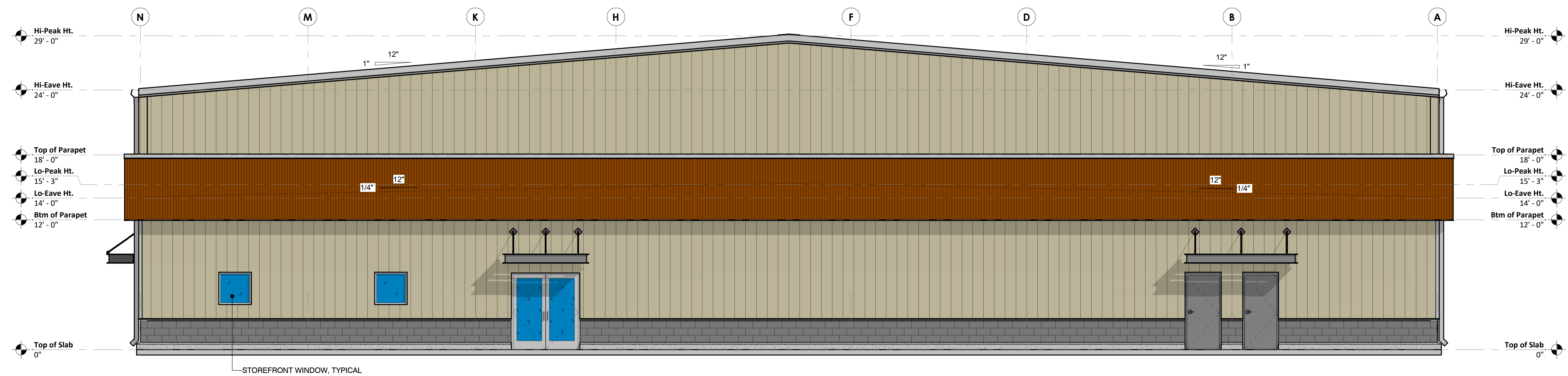
WEAVER MOUNTAINS REGIONAL PUBLIC SAFETY FACILITY

Peeples Valley, AZ 86332



A NORTH ELEVATION VIEW

3/16" = 1'-0" Re: /



B EAST ELEVATION VIEW

3/16" = 1'-0" Re: /

T25-068
SK-9
12/10/2025
2/17/2026
3:06:54 PM



(928) 615-1700 Tel 3967 E. 41st Place Yuma, AZ 85365



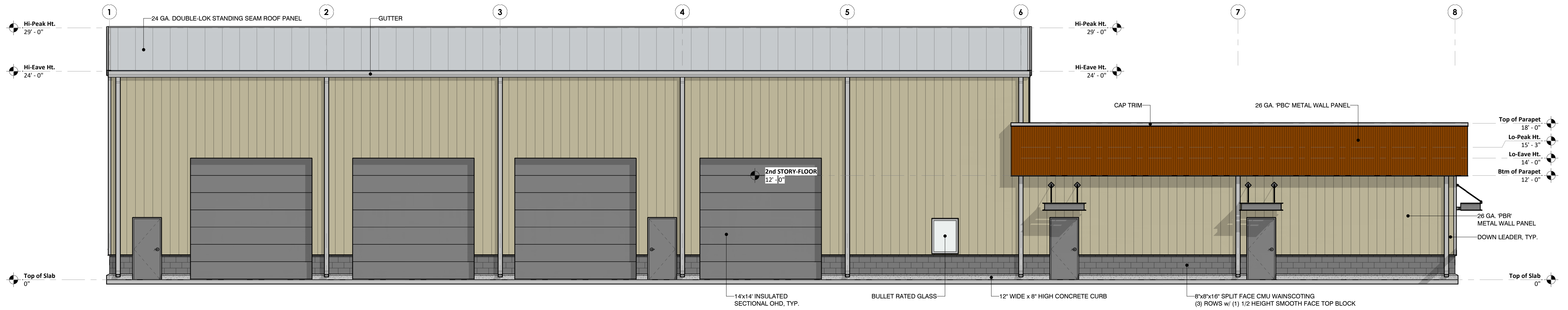
Sheet Number

P.4

EXTERIOR ELEVATIONS

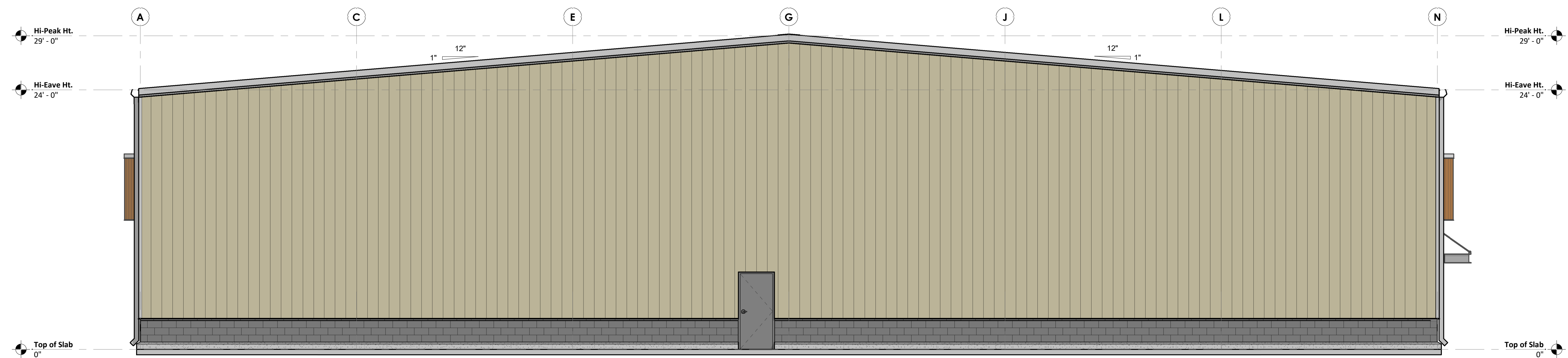
WEAVER MOUNTAINS REGIONAL PUBLIC SAFETY FACILITY

Peeples Valley, AZ 86332



C SOUTH ELEVATION VIEW

3/16" = 1'-0" Re: /



D WEST ELEVATION VIEW

3/16" = 1'-0" Re: /

T25-068
SK-9
12/10/2025
2/17/2026
3:07:23 PM



(928) 615-1700 Tel 3967 E. 41st Place Yuma, AZ 85365



Sheet Number

P.5

**YAVAPAI COUNTY
2026 NET ASSESSED
LIMITED PROPERTY VALUE (LPV)**

JANUARY 31, 2026

Reported by Judd W. Simmons, Yavapai County Assessor

FINAL REPORT	CENTRALLY VALUED	REAL ESTATE	PERSONAL PROPERTY	LPV 2026 NET ASSD VALUES	% CHANGE	LPV 2025 NET ASSD VALUES
YAVAPAI COUNTY****	\$ 330,991,417	\$ 3,829,359,580	\$ 72,708,877	\$ 4,233,059,874	5%	\$ 4,026,883,941
LIBRARY	\$ 330,991,417	\$ 3,829,359,580	\$ 72,708,877	\$ 4,233,059,874	5%	\$ 4,026,848,941
FIRE ASSISTANCE (FDAT)	\$ 330,991,417	\$ 3,829,359,580	\$ 72,708,877	\$ 4,233,059,874	5%	\$ 4,026,883,941
COUNTY FLOOD	\$ 58,110,277	\$ 3,829,359,580	\$ 29,041,206	\$ 3,916,511,063	6%	\$ 3,682,548,118
YAVAPAI COLLEGE****	\$ 330,991,417	\$ 3,829,359,580	\$ 72,708,877	\$ 4,233,059,874	5%	\$ 4,026,883,941
HOSPITAL	\$ 112,645,807	\$ 2,450,673,960	\$ 26,500,542	\$ 2,589,820,309	6%	\$ 2,441,286,044
TOWNS						
CHINO VALLEY	\$ 10,037,276	\$ 118,553,333	\$ 1,992,665	\$ 130,583,274	5%	\$ 124,144,923
CLARKDALE****	\$ 3,211,919	\$ 53,621,154	\$ 385,925	\$ 57,218,998	6%	\$ 54,203,268
COTTONWOOD	\$ 11,711,153	\$ 126,687,760	\$ 5,428,006	\$ 143,826,919	10%	\$ 130,499,588
JEROME****	\$ 255,636	\$ 7,879,820	\$ 4,836	\$ 8,140,292	4%	\$ 7,806,475
PRESCOTT****	\$ 30,015,751	\$ 1,012,024,699	\$ 8,080,457	\$ 1,050,120,907	6%	\$ 989,486,553
PRESCOTT VALLEY	\$ 18,756,606	\$ 568,462,842	\$ 8,947,216	\$ 596,166,664	6%	\$ 561,471,500
TOWN OF CAMP VERDE	\$ 5,280,476	\$ 104,240,211	\$ 4,124,211	\$ 113,644,898	7%	\$ 105,784,666
SEDONA	\$ 5,862,078	\$ 316,218,470	\$ 1,733,751	\$ 323,814,299	5%	\$ 307,128,151
PEORIA	\$ 80,504	\$ 94,141	\$ -	\$ 174,645	3%	\$ 169,997
TOWN OF DEWEY-HUMBOLDT	\$ 2,446,067	\$ 41,007,441	\$ 542,594	\$ 43,996,102	6%	\$ 41,667,719
TOWN OF WICKENBURG	\$ 1,456,302	\$ 59,984,943	\$ 184,731	\$ 61,625,976	7%	\$ 57,565,726
SCHOOLS						
WILLIAMSON VLY ELEM. #2	\$ 2,738,423	\$ 27,850,333	\$ 91,687	\$ 30,680,443	5%	\$ 29,259,670
CLKD-JERM ELEM. #3	\$ 4,149,655	\$ 53,895,762	\$ 9,413,744	\$ 67,459,161	3%	\$ 65,589,200
CTWD-OAK CR. ELEM. #6	\$ 25,065,436	\$ 327,638,809	\$ 6,491,921	\$ 359,196,166	7%	\$ 335,201,790
SKULL VLY ELEM. #15	\$ 1,572,367	\$ 8,897,735	\$ 243,267	\$ 10,713,369	-3%	\$ 11,023,469
CONGRESS ELEM. #17	\$ 3,354,045	\$ 29,950,472	\$ 544,117	\$ 33,848,634	3%	\$ 32,730,724
KIRKLAND ELEM. #23	\$ 3,288,610	\$ 12,194,946	\$ 360,909	\$ 15,844,465	1%	\$ 15,683,219
BEAVER CR. ELEM #26	\$ 2,720,533	\$ 37,094,428	\$ 559,280	\$ 40,374,241	6%	\$ 37,931,555
HILLSIDE ELEM. #35	\$ 1,943,823	\$ 940,805	\$ 44,440	\$ 2,929,068	-20%	\$ 3,654,014
CROWN KING ELEM. #41	\$ 633,135	\$ 5,064,373	\$ 741	\$ 5,698,249	5%	\$ 5,413,043
CANON ELEM. #50	\$ 3,715,088	\$ 17,534,017	\$ 944,530	\$ 22,193,635	5%	\$ 21,212,306
YARNELL ELEM. #52	\$ 1,750,911	\$ 13,956,130	\$ 177,139	\$ 15,884,180	7%	\$ 14,893,331
PRESCOTT UNIF. #1	\$ 42,470,550	\$ 1,421,110,752	\$ 10,133,766	\$ 1,473,715,068	6%	\$ 1,386,207,121
SED-OAK CR UNIF. #9	\$ 12,647,476	\$ 626,727,100	\$ 4,159,582	\$ 643,534,158	5%	\$ 610,634,410
BAGDAD UNIF. #20	\$ 117,756,750	\$ 10,324,482	\$ 1,293,709	\$ 129,374,941	-13%	\$ 149,168,791
HUMBOLDT UNIF. #22	\$ 31,370,604	\$ 713,170,283	\$ 10,894,946	\$ 755,435,833	6%	\$ 711,484,628
CAMP VERDE UNIF. #28	\$ 8,021,069	\$ 110,340,641	\$ 4,170,703	\$ 122,532,413	7%	\$ 114,321,821
ASH FORK UNIF. #31	\$ 12,118,962	\$ 15,264,599	\$ 334,730	\$ 27,718,291	2%	\$ 27,262,262
SELIGMAN UNIF. #40	\$ 11,622,161	\$ 21,887,671	\$ 3,132,727	\$ 36,642,559	-5%	\$ 38,689,491
MAYER UNIF. #43	\$ 12,930,993	\$ 39,145,248	\$ 1,551,581	\$ 53,627,822	8%	\$ 49,825,261
CHINO VLY UNIF. #51	\$ 28,351,870	\$ 259,171,973	\$ 17,746,739	\$ 305,270,582	5%	\$ 291,297,232
WICKENBURG S.D. #60	\$ 2,768,956	\$ 77,199,022	\$ 418,618	\$ 80,386,596	7%	\$ 75,400,603
SCHOOLS TOTAL	\$ 330,991,417	\$ 3,829,359,581	\$ 72,708,876	\$ 4,233,059,874	5%	\$ 4,026,883,941
MINGUS UNION H.S. #4	\$ 29,215,091	\$ 381,534,571	\$ 15,905,665	\$ 426,655,327	6%	\$ 400,790,990
WM. VALLEY #2-T03 LOCAL AID COMMON SD	\$ 2,738,423	\$ 27,850,333	\$ 91,687	\$ 30,680,443	5%	\$ 29,259,670
SKULL VLY #15-T03 LOCAL AID COMMON SD	\$ 1,572,367	\$ 8,897,735	\$ 243,267	\$ 10,713,369	-3%	\$ 11,023,469
CONGRESS #17-T03 LOCAL AID COMMON SD	\$ 3,354,045	\$ 29,950,472	\$ 544,117	\$ 33,848,634	3%	\$ 32,730,724
KIRKLAND #23-T03 LOCAL AID COMMON SD	\$ 3,288,610	\$ 12,194,946	\$ 360,909	\$ 15,844,465	1%	\$ 15,683,219
BEAVER CR SD#26-T03 LOCAL AID COMMON SD	\$ 2,720,533	\$ 37,094,428	\$ 559,280	\$ 40,374,241	6%	\$ 37,931,555
HILLSIDE #35 T-03 LOCAL AID COMMON SD	\$ 1,943,823	\$ 940,805	\$ 44,440	\$ 2,929,068	-20%	\$ 3,654,014
CANON SD#50-T03 LOCAL AID COMMON SD	\$ 3,715,088	\$ 17,534,017	\$ 944,530	\$ 22,193,635	5%	\$ 21,212,306
YARNELL SD#52-T03 LOCAL AID COMMON SD	\$ 1,750,911	\$ 13,956,130	\$ 177,139	\$ 15,884,180	7%	\$ 14,893,331

**YAVAPAI COUNTY
2026 NET ASSESSED
LIMITED PROPERTY VALUE (LPV)**

Reported by Judd W. Simmons, Yavapai County

BONDS SD #4 PR 7/91	\$	12,647,476	\$626,727,100	\$	4,159,582	\$	643,534,158	5%	\$	610,634,410	
BONDS SD #1 PR 7/91	\$	396,258	\$	8,459,537	\$	40,458	\$	8,896,253	6%	\$	8,423,925
BONDS SD #51 AFT 7/91	\$	396,258	\$	8,459,537	\$	40,458	\$	8,896,253	6%	\$	8,423,925
BONDS SD #9 Bi County Tax Repayme	\$	10,494,365	\$	561,827,858	\$	2,079,987	\$	574,402,210	5%	\$	546,233,188
VALLEY ACADEMY ED DIST	\$	49,883,636	\$	1,118,602,312	\$	24,235,950	\$	1,192,721,898	6%	\$	1,125,747,222
MOUNTAINS INST JTED	\$	256,621,890	\$	2,480,075,007	\$	45,088,199	\$	2,781,785,096	5%	\$	2,653,934,786
WEST-MEC JTED	\$	2,768,956	\$	77,199,022	\$	418,618	\$	80,386,596	7%	\$	75,400,603

YAVAPAI COUNTY
2026 NET ASSESSED
LIMITED PROPERTY VALUE (LPV) SPECIAL DISTRICTS
 Reported by Judd W. Simmons, Yavapai County Assessor

JANUARY 31, 2026

FINAL REPORT	CENTRALLY VALUED	REAL ESTATE	PERSONAL PROPERTY	SPECIAL DISTRICTS LPV 2026 NET ASSD VALUES	% CHNG	SPECIAL DISTRICTS LPV 2025 NET ASSD VALUES
SPECIAL DISTRICTS						
ASHFORK FD	\$ 880,756	\$ 4,049,226	\$ 104,244	\$ 5,034,226	39%	\$ 3,614,098
CENTRAL YAV FD	\$ 40,411,820	\$ 1,094,905,784	\$ 12,807,858	\$ 1,148,125,462	6%	\$ 1,078,939,298
CHINO VALLEY FD	\$ 13,427,489	\$ 194,640,698	\$ 3,380,048	\$ 211,448,235	6%	\$ 199,787,661
CONGRESS FD	\$ 1,046,426	\$ 18,805,090	\$ 467,050	\$ 20,318,566	5%	\$ 19,385,125
SEDONA FD	\$ 13,077,239	\$ 629,210,027	\$ 4,162,000	\$ 646,449,266	5%	\$ 613,276,463
SELIGMAN FD	\$ 464,268	\$ 2,104,212	\$ 90,794	\$ 2,659,274	3%	\$ 2,592,673
YARNELL FD	\$ 720,754	\$ 6,276,117	\$ 94,756	\$ 7,091,627	6%	\$ 6,709,791
GROOM CREEK FD	\$ 788,417	\$ 22,162,725	\$ 18,276	\$ 22,969,418	6%	\$ 21,614,624
MAYER FD	\$ 8,095,339	\$ 34,341,879	\$ 1,493,676	\$ 43,930,894	8%	\$ 40,526,464
CROWN KING FD	\$ 219,146	\$ 3,558,982	\$ 356	\$ 3,778,484	5%	\$ 3,588,910
WICKENBURG FD	\$ 1,005,648	\$ 18,371,996	\$ 22,253	\$ 19,399,897	5%	\$ 18,405,149
PEEPLER VALLEY FD	\$ 1,067,779	\$ 7,632,289	\$ 62,403	\$ 8,762,471	7%	\$ 8,210,266
VERDE VALLEY FD	\$ 12,281,140	\$ 231,631,825	\$ 1,451,650	\$ 245,364,615	6%	\$ 232,107,551
WILLIAMSON VALLEY FD	\$ 2,336,033	\$ 26,855,663	\$ 86,051	\$ 29,277,747	8%	\$ 27,149,963
DAISY MOUNTAIN FD	\$ 3,680,663	\$ 17,365,216	\$ 942,715	\$ 21,988,594	5%	\$ 20,990,142
COPPER CANYON FIRE & MED DIST	\$ 8,620,134	\$ 144,518,054	\$ 4,678,669	\$ 157,816,857	7%	\$ 147,307,579
YARNELL SLID	\$ 374,251	\$ 3,182,670	\$ 36,670	\$ 3,593,591	5%	\$ 3,433,993
ASHFORK SLID	\$ 577,468	\$ 2,200,385	\$ 53,993	\$ 2,831,846	6%	\$ 2,663,486
SELIGMAN SLID	\$ 399,439	\$ 1,354,329	\$ 39,324	\$ 1,793,092	3%	\$ 1,740,982
CHINO VALLEY SLID 1	\$ 85,315	\$ 1,510,107	\$ 614	\$ 1,596,036	3%	\$ 1,545,662
CHINO VALLEY SLID 2	\$ 60,536	\$ 2,413,934	\$ 395	\$ 2,474,865	5%	\$ 2,363,095
CHINO VALLEY SLID 3A	\$ 68,046	\$ 1,833,676	\$ 326	\$ 1,902,048	6%	\$ 1,792,122
CHINO VALLEY IRRIG	\$ 287,038	\$ 3,155,695	\$ 49,056	\$ 3,491,789	8%	\$ 3,234,867
RED ROCK ROAD EMD	\$ 4,568,832	\$ 239,435,097	\$ 346,236	\$ 244,350,165	5%	\$ 233,161,128
SHERIFF'S POSSE RIMD	\$ 48,883	\$ 1,790,637	\$ 246	\$ 1,839,766	5%	\$ 1,754,795
HIGHLAND PINES WID	\$ 225,760	\$ 12,067,611	\$ 55	\$ 12,293,426	6%	\$ 11,595,383
BCC WID	\$ 1,088,389	\$ 10,619,146	\$ 373,341	\$ 12,080,876	6%	\$ 11,418,256
JACKSON AC DWID	\$ 7,455	\$ 433,790	\$ -	\$ 441,245	5%	\$ 418,780
CONGRESS DWID	\$ 615,234	\$ 11,523,237	\$ 296,737	\$ 12,435,208	4%	\$ 11,899,968
HOLIDAY HILLS WID	\$ 49,384	\$ 1,253,471	\$ 46,806	\$ 1,349,661	1%	\$ 1,335,667
QUAIL RIDGE WID	\$ 162,155	\$ 3,901,319	\$ 1,384	\$ 4,064,858	5%	\$ 3,868,612
AMERICAN RANCH DWID	\$ 227,320	\$ 11,841,897	\$ 170	\$ 12,069,387	8%	\$ 11,176,195
TIPEJI DWID	\$ 12,186	\$ 350,900	\$ -	\$ 363,086	129%	\$ 158,809
RETREAT AT OAK CREEK DWID	\$ 44,456	\$ 4,726,648	\$ -	\$ 4,771,104	5%	\$ 4,545,900
YAVAPAI RANCH DWID	\$ 28,594	\$ 74,656	\$ -	\$ 103,250	-1%	\$ 104,471
MYSTIC HEIGHTS DWID	\$ 18,999	\$ 1,447,643	\$ -	\$ 1,466,642	5%	\$ 1,398,009
VENTURA RANCH DWID	\$ 76,177	\$ 1,588,052	\$ 2,174	\$ 1,666,403	8%	\$ 1,544,744
OAK CREEK DWID	\$ 474,000	\$ 34,563,082	\$ 81,791	\$ 35,118,873	5%	\$ 33,601,182
STRINGFIELD RANCH DWID	\$ 37,855	\$ 310,451	\$ -	\$ 348,306	11%	\$ 314,335
MOUNTAIN CLUB DWID	\$ -	\$ 10,124,748	\$ -	\$ 10,124,748	0%	NEW FOR 2026
CAMP VERDE SAN DIST*	\$ 22,380	\$ 39,629,754	\$ 2,115,837	\$ 41,767,971	8%	\$ 38,832,755
SELIGMAN SAN DIST*	\$ 30,840	\$ 486,110	\$ 1,415	\$ 518,365	-4%	\$ 542,039
CREEKSIDE SAN DIST*	\$ 256	\$ 5,687,168	\$ -	\$ 5,687,424	6%	\$ 5,378,153
ICR SANITARY DIST*	\$ 204,595	\$ 66,803,838	\$ 4,389	\$ 67,012,822	9%	\$ 61,661,056
HIGH VALLEY RANCH DWWID	\$ 159	\$ 5,278,096	\$ -	\$ 5,278,255	9%	\$ 4,849,696
CALV. CHAP. WSTWATER IMP	\$ 46	\$ 788,488	\$ 13,461	\$ 801,995	2%	\$ 789,411
BRYCE CANYON DR SEWER ID*	\$ 13	\$ 403,124	\$ -	\$ 403,137	5%	\$ 384,040
ASH FORK SAN DIST*	\$ 19,645	\$ 2,294,732	\$ 28,929	\$ 2,343,306	6%	\$ 2,201,685
KINGS RANCH#2 DWID	\$ 43,591	\$ 1,181,588	\$ 494	\$ 1,225,673	7%	\$ 1,143,988
WEAVER MOUNTAIN DWWID	\$ 128	\$ 1,518,235	\$ -	\$ 1,518,363	4%	\$ 1,454,337
BIG PARK DOM WW IMP	\$ 312,880	\$ 184,509,940	\$ 8,974	\$ 184,831,794	5%	\$ 176,212,959
POQUITO VALLEY RID	\$ 405,385	\$ 7,462,601	\$ 181,964	\$ 8,049,950	6%	\$ 7,579,994
PONDEROSA PARK WID	\$ 144,430	\$ 6,286,132	\$ 11,396	\$ 6,441,958	5%	\$ 6,126,111
MAYER DOM WID	\$ 2,044,600	\$ 11,170,297	\$ 278,834	\$ 13,493,731	7%	\$ 12,655,058
DIAMOND VALLEY WD	\$ 433,795	\$ 15,410,277	\$ 10,418	\$ 15,854,490	7%	\$ 14,860,500
HASSYAMPA CFD	\$ 380,977	\$ 34,502,243	\$ 21,681	\$ 34,904,901	6%	\$ 33,005,662
HASSYAMPA CFD#2	\$ 61,331	\$ 8,737,436	\$ 103	\$ 8,798,870	5%	\$ 8,382,793
STONERIDGE CFD	\$ 993,322	\$ 39,506,012	\$ 4,606	\$ 40,503,940	5%	\$ 38,690,232
PRONGHORN RANCH CFD	\$ 1,074,555	\$ 39,860,606	\$ 12,599	\$ 40,947,760	7%	\$ 38,310,625
RAVEN RIDGE CFD	\$ 132,058	\$ 4,283,413	\$ 215	\$ 4,415,686	7%	\$ 4,138,364
EASTRIDGE CFD	\$ 64,095	\$ 2,303,861	\$ 20,518	\$ 2,388,474	2%	\$ 2,346,523
QUAILWOOD MEADOWS CFD	\$ 718,794	\$ 24,845,787	\$ 5,962	\$ 25,570,543	5%	\$ 24,446,169
PARKWAY CFD #1	\$ 37,073	\$ 1,909,039	\$ 23,218	\$ 1,969,330	12%	\$ 1,753,165
SOUTHSIDE CFD #1	\$ 30,529	\$ 1,219,645	\$ 8,307	\$ 1,258,481	3%	\$ 1,226,332
NORTHSIDE CFD#1	\$ 104,274	\$ 5,074,900	\$ 5,007	\$ 5,184,181	31%	\$ 3,959,273
ENTERTAINMENT CENTER CFD	\$ 1,216	\$ -	\$ -	\$ 1,216	-2%	\$ 1,238
MYSTIC HEIGHTS DWWID	\$ 58	\$ 1,447,643	\$ -	\$ 1,447,701	5%	\$ 1,378,808
CHINO VLY MAINTENANCE ID	\$ -	\$ 275,074	\$ 35,483	\$ 310,557	3%	\$ 302,551

**YAVAPAI COUNTY
2026 NET ASSESSED
FULL CASH VALUE (FCV)**

JANUARY 31, 2026

Reported by Judd W. Simmons, Yavapai County Assessor

FINAL REPORT	CENTRALLY VALUED	REAL ESTATE	PERSONAL PROPERTY	FCV 2026 NET ASSD VALUES	% CHNG	FCV 2025 NET ASSD VALUES
YAVAPAI COUNTY	\$ 332,086,950	\$ 6,469,440,707	\$ 73,275,121	\$ 6,874,802,778	4%	\$ 6,637,350,149
LIBRARY	\$ 332,086,950	\$ 6,469,440,707	\$ 73,275,121	\$ 6,874,802,778	4%	\$ 6,637,350,149
FIRE ASSISTANCE (FDAT)	\$ 332,086,950	\$ 6,469,440,707	\$ 73,275,121	\$ 6,874,802,778	4%	\$ 6,637,350,149
COUNTY FLOOD	\$ 59,205,810	\$ 6,469,440,707	\$ 29,607,450	\$ 6,558,253,967	4%	\$ 6,292,998,827
YAVAPAI COLLEGE	\$ 332,086,950	\$ 6,469,440,707	\$ 73,275,121	\$ 6,874,802,778	4%	\$ 6,637,350,149
HOSPITAL	\$ 113,003,825	\$ 4,048,736,139	\$ 26,722,764	\$ 4,188,462,728	4%	\$ 4,024,839,754
TOWNS						
CHINO VALLEY	\$ 10,037,276	\$ 210,465,966	\$ 2,008,841	\$ 222,512,083	-1%	\$ 223,668,859
CLARKDALE	\$ 3,214,026	\$ 90,185,849	\$ 393,397	\$ 93,793,272	1%	\$ 92,997,874
COTTONWOOD	\$ 11,711,152	\$ 236,243,257	\$ 5,516,854	\$ 253,471,263	1%	\$ 250,147,334
JEROME	\$ 255,636	\$ 17,069,107	\$ 4,836	\$ 17,329,579	9%	\$ 15,889,838
PRESCOTT	\$ 30,015,751	\$ 1,594,271,821	\$ 8,196,511	\$ 1,632,484,083	4%	\$ 1,568,178,354
PRESCOTT VALLEY	\$ 18,756,607	\$ 985,669,272	\$ 8,975,262	\$ 1,013,401,141	5%	\$ 967,102,636
TOWN OF CAMP VERDE	\$ 5,280,477	\$ 194,753,063	\$ 4,173,542	\$ 204,207,082	3%	\$ 198,317,204
SEDONA	\$ 5,862,078	\$ 522,093,490	\$ 1,837,358	\$ 529,792,926	5%	\$ 505,823,611
PEORIA	\$ 80,504	\$ 190,960	\$ -	\$ 271,464	1%	\$ 268,109
TOWN OF DEWEY-HUMBOLDT	\$ 2,446,067	\$ 73,511,659	\$ 555,547	\$ 76,513,273	7%	\$ 71,464,946
TOWN OF WICKENBURG	\$ 1,456,302	\$ 95,055,637	\$ 184,731	\$ 96,696,670	-2%	\$ 98,318,961
SCHOOLS						
WILLIAMSON VLY ELEM. #2	\$ 2,817,871	\$ 46,280,852	\$ 91,687	\$ 49,190,410	4%	\$ 47,400,954
CLKD-JERM ELEM. #3	\$ 4,155,184	\$ 98,461,854	\$ 9,421,216	\$ 112,038,254	1%	\$ 110,389,189
CTWD-OAK CR. ELEM. #6	\$ 25,072,507	\$ 589,040,173	\$ 6,586,934	\$ 620,699,614	3%	\$ 603,715,230
SKULL VLY ELEM. #15	\$ 1,673,508	\$ 16,114,610	\$ 243,461	\$ 18,031,579	-1%	\$ 18,281,556
CONGRESS ELEM. #17	\$ 3,475,882	\$ 50,977,469	\$ 547,406	\$ 55,000,757	-1%	\$ 55,570,732
KIRKLAND ELEM. #23	\$ 3,321,504	\$ 23,108,527	\$ 361,448	\$ 26,791,479	1%	\$ 26,415,610
BEAVER CR. ELEM #26	\$ 2,720,533	\$ 73,618,599	\$ 563,043	\$ 76,902,175	2%	\$ 75,616,593
HILLSIDE ELEM. #35	\$ 2,011,585	\$ 1,703,140	\$ 44,440	\$ 3,759,165	-18%	\$ 4,597,308
CROWN KING ELEM. #41	\$ 633,135	\$ 9,747,936	\$ 741	\$ 10,381,812	-1%	\$ 10,488,833
CANON ELEM. #50	\$ 3,715,089	\$ 37,275,226	\$ 948,663	\$ 41,938,978	3%	\$ 40,742,769
YARNELL ELEM. #52	\$ 1,750,956	\$ 29,694,981	\$ 183,543	\$ 31,629,480	7%	\$ 29,467,836
PRESCOTT UNIF. #1	\$ 42,473,329	\$ 2,255,011,291	\$ 10,274,575	\$ 2,307,759,195	4%	\$ 2,212,198,482
SED-OAK CR UNIF. #9	\$ 12,647,478	\$ 1,044,805,856	\$ 4,305,064	\$ 1,061,758,398	6%	\$ 999,551,606
BAGDAD UNIF. #20	\$ 117,756,749	\$ 18,487,046	\$ 1,303,720	\$ 137,547,515	-12%	\$ 156,732,464
HUMBOLDT UNIF. #22	\$ 31,370,605	\$ 1,239,328,470	\$ 10,939,116	\$ 1,281,638,191	5%	\$ 1,223,157,872
CAMP VERDE UNIF. #28	\$ 8,021,070	\$ 206,076,068	\$ 4,220,645	\$ 218,317,783	3%	\$ 211,974,464
ASH FORK UNIF. #31	\$ 12,301,211	\$ 31,111,013	\$ 336,309	\$ 43,748,533	5%	\$ 41,633,779
SELIGMAN UNIF. #40	\$ 12,023,736	\$ 42,687,492	\$ 3,136,898	\$ 57,848,126	-4%	\$ 60,016,721
MAYER UNIF. #43	\$ 12,930,993	\$ 75,011,121	\$ 1,567,012	\$ 89,509,126	6%	\$ 84,454,972
CHINO VLY UNIF. #51	\$ 28,422,403	\$ 454,437,530	\$ 17,780,581	\$ 500,640,514	1%	\$ 495,410,331
WICKENBURG SD #60	\$ 2,791,622	\$ 126,461,454	\$ 418,618	\$ 129,671,694	0%	\$ 129,532,848
SCHOOLS TOTAL	\$ 332,086,950	\$ 6,469,440,708	\$ 73,275,120	\$ 6,874,802,778	4%	\$ 6,637,350,149
MINGUS UNION H.S. #4	\$ 29,227,691	\$ 687,502,027	\$ 16,008,150	\$ 732,737,868	3%	\$ 714,104,419
WM. VALLEY #2-T03 LOCAL AID COMMON SD	\$ 2,817,871	\$ 46,280,852	\$ 91,687	\$ 49,190,410	4%	\$ 47,400,954
SKULL VLY #15-T03 LOCAL AID COMMON SD	\$ 1,673,508	\$ 16,114,610	\$ 243,461	\$ 18,031,579	-1%	\$ 18,281,556
CONGRESS #17-T03 LOCAL AID COMMON SD	\$ 3,475,882	\$ 50,977,469	\$ 547,406	\$ 55,000,757	-1%	\$ 55,570,732
KIRKLAND #23-T03 LOCAL AID COMMON SD	\$ 3,321,504	\$ 23,108,527	\$ 361,448	\$ 26,791,479	1%	\$ 26,415,610
BEAVER CR SD#26-T03 LOCAL AID COMMON SD	\$ 2,720,533	\$ 73,618,599	\$ 563,043	\$ 76,902,175	2%	\$ 75,616,593

**YAVAPAI COUNTY
2026 NET ASSESSED
FULL CASH VALUE (FCV)**

	Reported by Judd W. Simmons, Yavapai County										
HILLSIDE #35 T-03 LOCAL AID COMMON SD	\$	2,011,585	\$	1,703,140	\$	44,440	\$	3,759,165	-18%	\$	4,597,308
CANON SD#50-T03 LOCAL AID COMMON SD	\$	3,715,089	\$	37,275,226	\$	948,663	\$	41,938,978	3%	\$	40,742,769
YARNELL SD#52-T03 LOCAL AID COMMON SD	\$	1,750,956	\$	29,694,981	\$	183,543	\$	31,629,480	7%	\$	29,467,836
BONDS SD #4 PR 7/91	\$	12,647,478	\$	1,044,805,856	\$	4,305,064	\$	1,061,758,398	6%	\$	999,551,606
BONDS SD #1 PR 7/91	\$	396,258	\$	15,935,961	\$	40,458	\$	16,372,677	1%	\$	16,185,124
BONDS SD #51 AFT 7/91	\$	396,258	\$	15,935,961	\$	40,458	\$	16,372,677	1%	\$	16,185,124
BONDS SD #9 Bi County Tax Repayment	\$	10,494,365	\$	930,720,140	\$	2,183,594	\$	943,398,099	6%	\$	886,493,036
VALLEY ACADEMY ED DIST	\$	49,896,239	\$	1,938,383,951	\$	24,533,859	\$	2,012,814,049	5%	\$	1,925,630,490
MOUNTAINS INST JTED	\$	257,279,026	\$	4,116,073,962	\$	45,338,212	\$	4,418,691,200	3%	\$	4,273,604,620
WEST-MEC JTED	\$	2,791,622	\$	126,461,454	\$	418,618	\$	129,671,694	0%	\$	129,532,848

**YAVAPAI COUNTY
2026 NET ASSESSED
FULL CASH VALUE (FCV)
SPECIAL DISTRICTS**

Reported by Judd W. Simmons, Yavapai County Assessor

JANUARY 31, 2026

FINAL REPORT	CENTRALLY VALUED	REAL ESTATE	PERSONAL PROPERTY	SPECIAL DISTRICTS		
				FCV 2026 NET ASSD VALUES	FCV 2025 NET ASSD VALUES	
SPECIAL DISTRICTS					% CHNG	
ASHFORK FD	\$ 886,966	\$ 8,359,251	\$ 104,749	\$ 9,350,966	35%	\$ 6,905,438
CENTRAL YAV FD	\$ 40,411,822	\$ 1,846,149,561	\$ 12,876,483	\$ 1,899,437,866	5%	\$ 1,812,951,688
CHINO VALLEY FD	\$ 13,459,216	\$ 346,215,338	\$ 3,410,453	\$ 363,085,007	1%	\$ 359,241,002
CONGRESS FD	\$ 1,072,734	\$ 30,547,597	\$ 469,535	\$ 32,089,866	0%	\$ 32,034,862
SEDONA FD	\$ 13,077,241	\$ 1,048,898,793	\$ 4,307,482	\$ 1,066,283,516	6%	\$ 1,003,718,130
SELIGMAN FD	\$ 464,268	\$ 5,233,468	\$ 90,794	\$ 5,788,530	2%	\$ 5,687,497
YARNELL FD	\$ 720,799	\$ 14,924,407	\$ 96,243	\$ 15,741,449	6%	\$ 14,817,883
GROOM CREEK FD	\$ 788,417	\$ 37,847,475	\$ 18,276	\$ 38,654,168	6%	\$ 36,523,964
MAYER FD	\$ 8,095,339	\$ 65,902,532	\$ 1,508,883	\$ 75,506,754	6%	\$ 71,084,420
CROWN KING FD	\$ 219,146	\$ 6,992,772	\$ 356	\$ 7,212,274	-2%	\$ 7,348,358
WICKENBURG FD	\$ 1,024,168	\$ 32,085,821	\$ 22,253	\$ 33,132,242	7%	\$ 31,014,361
PEEPLER VALLEY FD	\$ 1,072,483	\$ 14,703,096	\$ 67,320	\$ 15,842,899	7%	\$ 14,754,150
VERDE VALLEY FD	\$ 12,283,247	\$ 405,432,821	\$ 1,465,287	\$ 419,181,355	4%	\$ 404,414,423
WILLIAMSON VALLEY FD	\$ 2,336,033	\$ 43,759,744	\$ 86,051	\$ 46,181,828	6%	\$ 43,643,353
DAISY MOUNTAIN FD (FKA BCC)	\$ 3,680,664	\$ 36,891,776	\$ 946,848	\$ 41,519,288	3%	\$ 40,404,243
COPPER CANYON FIRE & MED DIST	\$ 8,620,135	\$ 274,395,967	\$ 4,731,763	\$ 287,747,865	3%	\$ 280,146,977
YARNELL SLID	\$ 374,251	\$ 7,735,755	\$ 38,157	\$ 8,148,163	4%	\$ 7,801,178
ASHFORK SLID	\$ 583,124	\$ 5,018,852	\$ 54,498	\$ 5,656,474	8%	\$ 5,225,362
SELIGMAN SLID	\$ 399,439	\$ 3,480,962	\$ 39,324	\$ 3,919,725	3%	\$ 3,806,521
CHINO VALLEY SLID 1	\$ 85,315	\$ 2,616,126	\$ 614	\$ 2,702,055	-1%	\$ 2,733,665
CHINO VALLEY SLID 2	\$ 60,536	\$ 4,245,197	\$ 395	\$ 4,306,128	0%	\$ 4,317,077
CHINO VALLEY SLID 3A	\$ 68,046	\$ 3,009,773	\$ 326	\$ 3,078,145	0%	\$ 3,070,462
CHINO VALLEY IRRIG	\$ 287,038	\$ 5,556,994	\$ 49,056	\$ 5,893,088	3%	\$ 5,738,819
RED ROCK ROAD EMD	\$ 4,568,832	\$ 397,084,633	\$ 346,236	\$ 401,999,701	9%	\$ 369,623,550
SHERIFF'S POSSE RIMD	\$ 48,883	\$ 2,945,349	\$ 246	\$ 2,994,478	1%	\$ 2,972,713
HIGHLAND PINES WID	\$ 225,760	\$ 19,372,153	\$ 55	\$ 19,597,968	5%	\$ 18,686,361
BCC WID	\$ 1,088,389	\$ 22,365,496	\$ 376,381	\$ 23,830,266	3%	\$ 23,139,859
JACKSON AC DWID	\$ 7,455	\$ 633,635	\$ -	\$ 641,090	6%	\$ 604,163
CONGRESS DWID	\$ 627,449	\$ 18,775,946	\$ 298,345	\$ 19,701,740	0%	\$ 19,783,900
HOLIDAY HILLS WID	\$ 49,384	\$ 1,974,146	\$ 47,208	\$ 2,070,738	-2%	\$ 2,107,499
QUAIL RIDGE WID	\$ 162,155	\$ 7,458,990	\$ 1,384	\$ 7,622,529	1%	\$ 7,569,357
AMERICAN RANCH DWID	\$ 227,320	\$ 17,441,523	\$ 170	\$ 17,669,013	4%	\$ 17,018,184
TIPEJI DWID	\$ 12,186	\$ 641,777	\$ -	\$ 653,963	125%	\$ 291,243
RETREAT AT OAK CREEK DWID	\$ 44,456	\$ 9,275,043	\$ -	\$ 9,319,499	2%	\$ 9,113,037
YAVAPAI RANCH WID	\$ 28,594	\$ 106,134	\$ -	\$ 134,728	2%	\$ 132,626
MYSTIC HEIGHTS DWID	\$ 18,999	\$ 2,266,974	\$ -	\$ 2,285,973	18%	\$ 1,932,838
VENTURA RANCH DWID	\$ 76,177	\$ 2,914,881	\$ 2,174	\$ 2,993,232	2%	\$ 2,925,339
OAK CREEK DWID	\$ 474,000	\$ 57,631,489	\$ 81,825	\$ 58,187,314	4%	\$ 55,790,666
STRINGFIELD RANCH DWID	\$ 37,855	\$ 620,970	\$ -	\$ 658,825	0%	\$ 422,031
MOUNTAIN CLUB DWID	\$ -	\$ 14,813,789	\$ -	\$ 14,813,789	0%	NEW FOR 2026
CAMP VERDE SAN DIST*	\$ 22,380	\$ 73,870,211	\$ 2,123,050	\$ 76,015,641	0%	\$ 73,669,296
SELIGMAN SAN DIST*	\$ 41,255	\$ 1,178,277	\$ 1,415	\$ 1,220,947	-5%	\$ 1,291,510
CREEKSIDE SAN DIST*	\$ 256	\$ 7,885,108	\$ -	\$ 7,885,364	1%	\$ 7,791,698
ICR SANITARY DIST*	\$ 204,596	\$ 104,447,630	\$ 4,389	\$ 104,656,615	5%	\$ 100,001,511
HIGH VALLEY RANCH DWID	\$ 159	\$ 8,165,507	\$ -	\$ 8,165,666	9%	\$ 7,462,033
CALV. CHAP. WSTWATER IMP	\$ 46	\$ 1,281,390	\$ 13,461	\$ 1,294,897	-1%	\$ 1,309,660
BRYCE CANYON DR SEWER ID*	\$ 13	\$ 560,179	\$ -	\$ 560,192	1%	\$ 556,250
ASH FORK SAN DIST*	\$ 25,855	\$ 5,228,277	\$ 29,434	\$ 5,283,566	8%	\$ 4,878,566
KINGS RANCH#2 DWID	\$ 43,591	\$ 2,467,303	\$ 494	\$ 2,511,388	0%	\$ 2,520,384
WEAVER MOUNTAIN DWID	\$ 128	\$ 2,459,760	\$ -	\$ 2,459,888	-2%	\$ 2,502,099
BIG PARK DOM WW IMP	\$ 312,879	\$ 310,949,487	\$ 8,974	\$ 311,271,340	9%	\$ 286,331,733
POQUITO VALLEY RID	\$ 405,385	\$ 12,751,452	\$ 182,418	\$ 13,339,255	6%	\$ 12,530,819
PONDEROSA PARK WID	\$ 144,430	\$ 11,418,638	\$ 11,396	\$ 11,574,464	4%	\$ 11,133,028
MAYER DOM WID	\$ 2,044,600	\$ 21,802,051	\$ 281,887	\$ 24,128,538	5%	\$ 22,877,328
DIAMOND VALLEY WD	\$ 433,795	\$ 27,255,540	\$ 10,418	\$ 27,699,753	4%	\$ 26,591,151
HASSYAMPA CFD	\$ 380,977	\$ 46,441,109	\$ 21,681	\$ 46,843,767	5%	\$ 44,545,886
HASSYAMPA CFD#2	\$ 61,331	\$ 11,475,051	\$ 103	\$ 11,536,485	6%	\$ 10,890,096
STONERIDGE CFD	\$ 993,322	\$ 62,417,358	\$ 4,606	\$ 63,415,286	0%	\$ 63,504,746
PRONGHORN RANCH CFD	\$ 1,074,555	\$ 65,568,411	\$ 12,599	\$ 66,655,565	3%	\$ 64,736,711
RAVEN RIDGE CFD	\$ 132,058	\$ 6,478,583	\$ 215	\$ 6,610,856	0%	\$ 6,613,836
EASTRIDGE CFD	\$ 64,095	\$ 4,302,801	\$ 20,518	\$ 4,387,414	9%	\$ 4,037,376
QUAILWOOD MEADOWS CFD	\$ 718,794	\$ 44,972,484	\$ 5,962	\$ 45,697,240	3%	\$ 44,481,073
PARKWAY CFD #1	\$ 37,073	\$ 3,077,563	\$ 23,218	\$ 3,137,854	9%	\$ 2,882,376
SOUTHSIDE CFD #1	\$ 30,529	\$ 2,767,505	\$ 8,307	\$ 2,806,341	7%	\$ 2,619,502
NORTHSIDE CFD#1	\$ 104,274	\$ 10,468,725	\$ 5,007	\$ 10,578,006	30%	\$ 8,133,483
ENTERTAINMENT CENTER CFD	\$ 1,216	\$ -	\$ -	\$ 1,216	-2%	\$ 1,238
MYSTIC HEIGHTS DWID	\$ 58	\$ 2,266,974	\$ -	\$ 2,267,032	18%	\$ 1,913,637
CHINO VLY MAINTENANCE ID	\$ -	\$ 468,332	\$ 35,483	\$ 503,815	13%	\$ 445,744

2026 FIRE DISTRICT LEVY LIMIT WORKSHEET

YAVAPAI COUNTY - PEEPLES VALLEY FIRE DISTRICT
--

ADJUSTMENTS FOR ANNEXED PROPERTY	2025
A.1. Net Assessed Value of Property Annexed for TY 2026	\$0
A.2. A.1. divided by 100	\$0
A.3. Prior Year Actual Tax Rate (excluding debt service tax rate)	\$3.7500
A.4. Adjustment for Annexed Property (A.2. multiplied by A.3.)	\$0

MAXIMUM ALLOWABLE LEVY LIMIT	2026
B.1. Prior Year Maximum Allowable Levy Limit (B.4 from prior year)	\$471,134
B.2. Line B.1. multiplied by 1.08	\$508,825
B.3. Plus amount attributable to annexed property (Line A.4.)	\$0
B.4. MAXIMUM ALLOWABLE LEVY LIMIT (Line B.2. + B.3.)	\$508,825

CURRENT YEAR NET ASSESSED VALUES	2026
C.1. Centrally Assessed Property	\$1,067,779
C.2. Locally Assessed Real Property	\$7,632,289
C.3. Locally Assessed Personal Property	\$62,403
C.4. Total Net Assessed Values (C.1. through C.3.)	\$8,762,471
C.5. C.4. divided by 100	\$87,625

CURRENT YEAR TAX RATE / LEVY LIMIT CALCULATION	2026
D.1. Current Year Net Assessed Values / 100 (Line C.5.)	\$87,625
D.2. Maximum Allowable Levy Limit (Line B.4.)	\$508,825
D.3. Tax Rate (D.2. divided by D.1.; rounded to 4 decimals)	\$5.8069
D.4. Maximum Tax Rate (lesser of D.3. or \$3.75)	\$3.7500
D.5. Current Year Allowable Tax Rate ¹	\$3.7500
D.6. Current Year Allowable Levy Limit (D.5. multiplied by D.1.)	\$328,593
D.7. Prior Year Excess Collections	
D.8. Prior Year Excess Levy	
D.9. Current Year Allowable Levy Limit (D.6. - D.7. - D.8.)	\$328,593

¹ Adjusted D.5. to avoid a levy that exceeds the maximum allowable levy limit (Line E

AS OF: All

LPV

LIMITED PROPERTY VALUE (PRIMARY) - VALUES FOR ALL PROPERTIES COMBINED

TAX YEAR: 2026

Tax Authority	Nomenclature	Legal Class	Parcel Count	Total Limited Property Value	Total Assessed Value	Exempt Amount	Net Assessed Value
11221	PEEPLS VALLEY FD		1093	\$80,030,639	\$9,222,177	\$459,706	\$8,762,471
		0103	7	\$118,183	\$18,317	\$0	\$18,317
		0103P	7	\$6,292,214	\$975,294	\$0	\$975,294
		0106	2	\$56,993	\$8,834	\$0	\$8,834
		0106P	2	\$338,612	\$52,485	\$0	\$52,485
		0112	7	\$1,254,697	\$194,478	\$0	\$194,478
		0113	7	\$14,260	\$2,210	\$0	\$2,210
		02R	659	\$15,440,043	\$2,316,026	\$354,637	\$1,961,389
		03	259	\$40,817,800	\$4,081,780	\$105,069	\$3,976,711
		03P	12	\$331,223	\$33,123	\$0	\$33,123
		0401	92	\$13,384,869	\$1,338,487	\$0	\$1,338,487
		0401P	10	\$169,750	\$16,976	\$0	\$16,976
		0402	15	\$822,734	\$82,275	\$0	\$82,275
		0402P	4	\$27,679	\$2,768	\$0	\$2,768
		0407	4	\$789,484	\$78,949	\$0	\$78,949
		0407P	4	\$73,260	\$7,326	\$0	\$7,326
		05	1	\$54,272	\$7,055	\$0	\$7,055
		05P	1	\$44,566	\$5,794	\$0	\$5,794



Peoples Valley Fire District

17275 W. Burning Bush Drive
Peoples Valley, AZ 86332

Monthly Financial Report – January 2026

Attached are the following for your information and review:

1. Balance Sheet as of January 31, 2026.
2. Summary of Reconciled Cash Balances as of January 31, 2026.
3. Income Statement of Revenues and Expenditures for January 2026 including budget to actual and year-to-date balances.
4. Income and Expenses Graph FY26.
5. Monthly Disbursement Report.
6. 12-Month Cash Flow.

Key points:

- Revenue for January is \$57,777, which is \$14,851 over budget.
 - Tax Revenue is \$15,211, which is \$11,465 under budget.
 - Non-Tax Revenue for January is \$42,567, which is \$26,317 over budget, driven by district services.
- Expenses for January totaled \$146,264, which is over budget by \$104,184.
 - Personnel Costs are over budget \$21,373, driven by personnel and wildland wages.
 - Other expenses over budget \$79,207, driven by Grant expenses.
 - Building and Land Costs are over budget \$5,195, driven by facilities repair and maintenance.
- Year to Date Revenue is \$963,084, which is \$413,426 over budget, driven by grant revenue & wildland.
- Year to Date Expense is \$712,238 which is \$238,100 over budget, driven by personnel costs, vehicle and equipment maintenance, and other expenses.

Please contact the Finance Department at (480) 422-9777 for any questions or concerns regarding this report.

This report and the attached detail reports have been reviewed and approved by the Fire Board.

Board Clerk

Date

02/10/26

Accrual Basis

PEEPLES VALLEY FIRE DISTRICT
Balance Sheet Prev Year Comparison
As of January 31, 2026

	Jan 31, 26	Jan 31, 25	\$ Change
ASSETS			
Current Assets			
Checking/Savings			
100 · CASH IN DEPOSITARY ACCOUNTS			
103 · NBAZ 8548	18,996.30	48,687.86	-29,691.56
101 · General Fund - Yavapai County	272,355.13	90,848.94	181,506.19
102 · Chase On-Line Checking	2,001.00	2,001.00	0.00
Total 100 · CASH IN DEPOSITARY ACCOU...	293,352.43	141,537.80	151,814.63
Total Checking/Savings	293,352.43	141,537.80	151,814.63
Accounts Receivable			
110 · ACCOUNTS RECEIVABLE	30,013.82	70,010.24	-39,996.42
Total Accounts Receivable	30,013.82	70,010.24	-39,996.42
Total Current Assets	323,366.25	211,548.04	111,818.21
TOTAL ASSETS	323,366.25	211,548.04	111,818.21
LIABILITIES & EQUITY			
Liabilities			
Current Liabilities			
Credit Cards			
215 · CREDIT CARDS PAYABLE	6,337.00	4,567.53	1,769.47
Total Credit Cards	6,337.00	4,567.53	1,769.47
Total Current Liabilities	6,337.00	4,567.53	1,769.47
Long Term Liabilities			
230 · KS StateBank Loan	114,128.68	114,128.68	0.00
Total Long Term Liabilities	114,128.68	114,128.68	0.00
Total Liabilities	120,465.68	118,696.21	1,769.47
Equity			
300 · Opening Balance Equity	75,432.36	75,432.36	0.00
320 · Unrestricted Net Assets	-136,838.70	-190,875.04	54,036.34
330 · FUND BALANCE	13,461.00	13,461.00	0.00
Net Income	250,845.91	194,833.51	56,012.40
Total Equity	202,900.57	92,851.83	110,048.74
TOTAL LIABILITIES & EQUITY	323,366.25	211,548.04	111,818.21

Peoples Valley Fire District
Summary of Reconciled Cash Balances
 Period Ending 01/31/2026

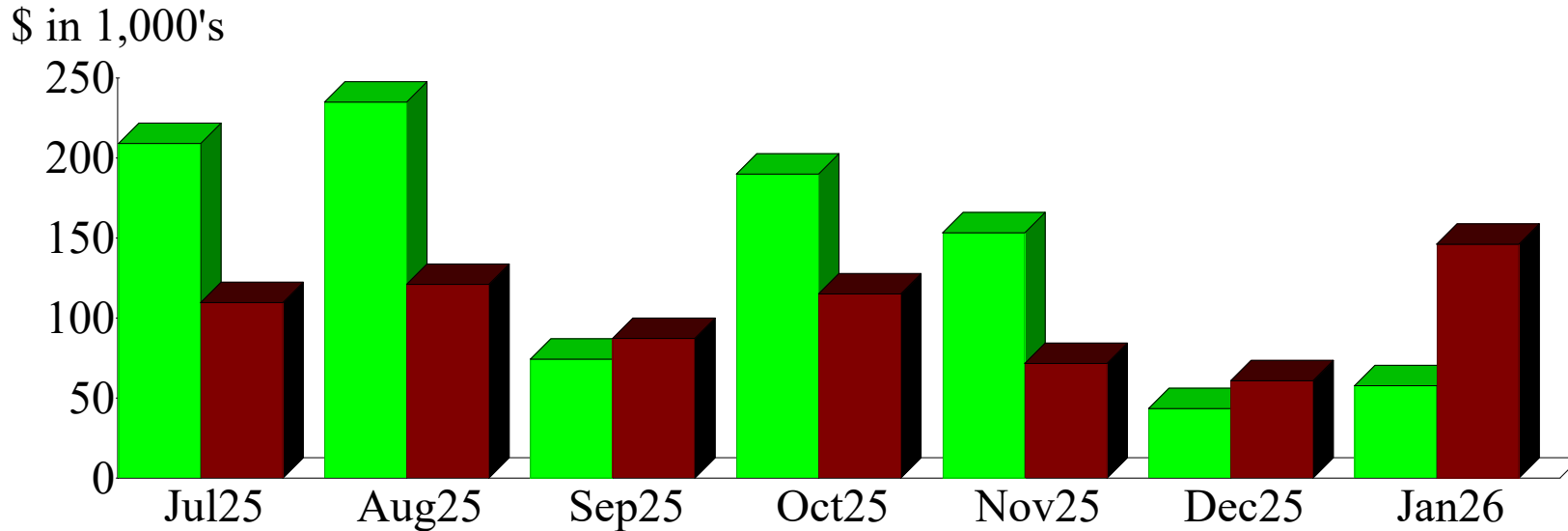
	Yavapai General 1/31/2026	Chase Operating 1/31/2026	National Bank of AZ 8548 1/31/2026
Beginning Balance	256,317.09	2,001.00	121,506.99
Cleared Transactions			
Checks and Payments			(143,481.48)
Deposits and Credits	16,038.04		49,907.29
Total Cleared Transactions	16,038.04	-	(93,574.19)
Cleared Balance	272,355.13	2,001.00	27,932.80
Uncleared Transactions			
Checks and Payments		-	(8,936.50)
Deposits and Credits			
Total Uncleared Transactions	-	-	(8,936.50)
Register Balance as of 01/31/26	272,355.13	2,001.00	18,996.30

02/10/26
 Accrual Basis

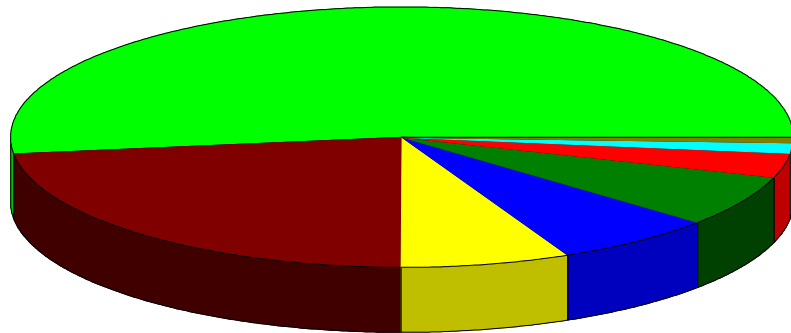
PEEPLES VALLEY FIRE DISTRICT Profit & Loss Budget Performance January 2026

	Jan 26	Budget	\$ Over Budget	Jul '25 - Jan 26	YTD Budget	\$ Over Budget	Annual Budget
Income							
Tax Levy Revenue	15,210.68	26,676.00	-11,465.32	255,914.06	260,909.00	-4,994.94	363,304.00
Non-Tax Levy Revenue	42,566.75	16,250.00	26,316.75	707,169.74	288,749.00	418,420.74	545,000.00
Total Income	57,777.43	42,926.00	14,851.43	963,083.80	549,658.00	413,425.80	908,304.00
Expense							
Personnel Costs	49,467.87	28,095.00	21,372.87	371,174.93	288,101.00	83,073.93	520,015.00
Buildings & Land	6,631.83	1,437.00	5,194.83	22,540.69	10,059.00	12,481.69	17,250.00
Vehicles & Equipment	3,788.92	3,167.00	621.92	48,186.47	22,169.00	26,017.47	38,000.00
Communications & IT	507.53	836.00	-328.47	9,761.66	5,852.00	3,909.66	10,035.00
Travel & Training/ Com Outre...	1,398.11	2,496.00	-1,097.89	50,638.16	47,850.00	2,788.16	90,698.00
Managerial Expenses	3,072.23	3,859.00	-786.77	46,332.62	42,827.00	3,505.62	77,926.00
Other Expenses	81,397.19	2,190.00	79,207.19	163,588.36	57,280.00	106,308.36	68,233.00
Managerial Costs	0.00			15.00			
Total Expense	146,263.68	42,080.00	104,183.68	712,237.89	474,138.00	238,099.89	822,157.00
Net Income	-88,486.25	846.00	-89,332.25	250,845.91	75,520.00	175,325.91	86,147.00

Income and Expense by Month July 2025 through January 2026



Expense Summary July 2025 through January 2026



Personnel Costs	52.11%
Other Expenses	22.97
Travel & Training/ Com Outreach	7.11
Vehicles & Equipment	6.77
Managerial Expenses	6.51
Buildings & Land	3.16
Communications & IT	1.37
Managerial Costs	0.01
Total	\$712,237.89

By Account

PEEPLS VALLEY FIRE DISTRICT
Monthly Disbursements
As of January 31, 2026

02/10/26

Accrual Basis

Type	Date	Num	Adj	Name	Memo	Class	Clr	Split	Debit	Credit	Balance
100 · CASH IN DEPOSITARY ACCOUNTS											373,166.25
103 · NBAZ 8548											114,848.16
Check	01/05/20:	EFT		CHASE CA...			X	215 · CR...		5,862.24	108,985.92
Check	01/05/20:	EFT		ADP - FEES			X	7103 · P...		140.78	108,845.14
Check	01/05/20:	Eft		Hanner Che...			X	8100 · G...		62,504.34	46,340.80
Check	01/08/20:	Eft		BH Guard			X	5006 · ...		2,093.00	44,247.80
Check	01/08/20:	1120		Eckard CC I...			X	6101 · F...		5,000.00	39,247.80
General Jo...	01/09/20:		*		Payroll ...		X	-SPLIT-		23,262.92	15,984.88
General Jo...	01/09/20:		*		Payroll ...		X	103 · NB...	0.00		15,984.88
Check	01/09/20:	EFT		CHASE CA...			X	215 · CR...		5,161.21	10,823.67
Check	01/09/20:	1121		TARGET S...			X	8100 · G...		1,577.10	9,246.57
Deposit	01/10/20:				Deposit		X	12000 · ...	5,000.00		14,246.57
Deposit	01/15/20:				Deposit		X	12000 · ...	7,425.00		21,671.57
Check	01/16/20:	EFT		ADP - FEES			X	7103 · P...		143.51	21,528.06
Check	01/20/20:	1122		Alicia Swain			X	6402 · Tr...		175.92	21,352.14
Check	01/20/20:	EFT		APS			X	6100 · U...		457.40	20,894.74
Check	01/20/20:	EFT		BINGHAM ...				6201 · E...		371.82	20,522.92
Check	01/20/20:	EFT		FIRE PENNY				8100 · G...		2,601.30	17,921.62
Check	01/20/20:	EFT		Global Med ...			X	6300 · Di...		162.24	17,759.38
Check	01/20/20:	EFT		JAMES VIN...				7105 · A...		1,800.00	15,959.38
Check	01/20/20:	1123		McCabe Ex...			X	6101 · F...		500.00	15,459.38
Check	01/20/20:	EFT		MOUNTAIN...			X	6200 · F...		1,993.03	13,466.35
Check	01/20/20:	EFT		OUTLAW S...				7103 · P...		120.75	13,345.60
Check	01/20/20:	EFT		Power Hawk			X	8100 · G...		6,067.50	7,278.10
Check	01/20/20:	EFT		R&R AUTO ...			X	6404 · ...		166.66	7,111.44
Check	01/20/20:	1124		Ray Palmer			X	6202 · V...		764.98	6,346.46
Check	01/20/20:	EFT		RDO EQUI...				6202 · V...		149.81	6,196.65
Check	01/20/20:	EFT		Streamline			X	6300 · Di...		189.00	6,007.65
Check	01/20/20:	EFT		VERIZON			X	6100 · U...		204.63	5,803.02
Check	01/20/20:	EFT		YARNELL ...				6101 · F...		33.99	5,769.03
Deposit	01/20/20:				Deposit		X	12000 · ...	10,000.00		15,769.03
Deposit	01/20/20:				Deposit		X	12000 · ...	2,244.00		18,013.03
Deposit	01/21/20:				Deposit		X	12000 · ...	12,250.00		30,263.03
Deposit	01/22/20:				Deposit		X	12000 · ...	8,612.94		38,875.97
General Jo...	01/23/20:		*		Payroll ...		X	-SPLIT-		24,111.95	14,764.02
General Jo...	01/23/20:		*		Payroll ...		X	103 · NB...	0.00		14,764.02
Deposit	01/29/20:				Deposit		X	12000 · ...	4,375.00		19,139.02
Check	01/30/20:	EFT		ADP - FEES			X	7103 · P...		118.07	19,020.95
Check	01/31/20:				Service ...	Oper...	X	7106 · B...		25.00	18,995.95
Deposit	01/31/20:				Interest	Oper...	X	410 · Int...	0.35		18,996.30
Total 103 · NBAZ 8548									49,907.29	145,759.15	18,996.30
101 · General Fund - Yavapai County											256,317.09
General Jo...	01/31/20:	202...	*	YAVAPAI C...	To Rec...	Oper...	X	4010 · P...	15,210.68		271,527.77
Deposit	01/31/20:				Interest	Oper...	X	410 · Int...	827.36		272,355.13
Total 101 · General Fund - Yavapai County									16,038.04	0.00	272,355.13

No assurance is provided on the financial statements. See accountant's disclaimer.

PEEPLES VALLEY FIRE DISTRICT
Monthly Disbursements
As of January 31, 2026

02/10/26

Accrual Basis

Type	Date	Num	Adj	Name	Memo	Class	Clr	Split	Debit	Credit	Balance
102 · Chase On-Line Checking											2,001.00
Total 102 · Chase On-Line Checking											2,001.00
Total 100 · CASH IN DEPOSITARY ACCOUNTS									65,945.33	145,759.15	293,352.43
TOTAL									65,945.33	145,759.15	293,352.43

No assurance is provided on the financial statements. See accountant's disclaimer.

Peeples Valley Fire District

Fiscal Year
Begins: Jul-25

Twelve-Month Cash Flow

Peeples Valley Fire District

	Beginning	Jul-25	Aug-25	Sep-25	Oct-25	Nov-25	Dec-25	Jan-26	Feb-26	Mar-26	Apr-26	May-26	Jun-26	Monthly Average	Overview
Cash Summary															
Cash on Hand (beginning of month)	69,189	69,189	149,955	119,721	207,671	327,916	296,820	373,166	293,352	273,147	261,275	309,381	314,441	249,670	
Cash Available (on hand + receipts, before cash out)	69,189	257,908	246,561	292,818	443,160	369,565	435,853	439,111	317,134	297,355	396,383	403,348	396,022	357,935	
Cash Position (end of month)	69,189	149,955	119,721	207,671	327,916	296,820	373,166	293,352	273,147	261,275	309,381	314,441	303,979	269,235	
Cash Receipts															
Tax Levy Revenue		2,684	351	6,414	165,184	34,154	31,915	15,211	7,532	7,958	60,525	19,384	6,996	29,859	
Non-Tax Levy Revenue		186,035	96,255	166,682	70,305	7,495	107,118	50,735	16,250	16,250	74,583	74,583	74,585	78,406	
Line of Credit		0	0	0	0	0	0	0	0	0	0	0	0	0	
Total Cash Receipts	0	188,719	96,606	173,096	235,489	41,650	139,033	65,945	23,782	24,208	135,108	93,967	81,581	108,265	
Cash Paid Out															
Disbursements		107,953	126,840	85,147	115,244	72,745	62,687	145,759	43,987	36,080	87,002	88,907	92,043	88,700	
Repayment of LOC		0	0	0	0	0	0	0	0	0	0	0	0	0	
Total Cash Paid Out		107,953	126,840	85,147	115,244	72,745	62,687	145,759	43,987	36,080	87,002	88,907	92,043	88,700	
		(Actual)	(Actual)	(Actual)	(Actual)	(Actual)	(Actual)	(Actual)	(Budget)	(Budget)	(Budget)	(Budget)	(Budget)		

Wednesday, February 18, 2026

Date:	Payee:	Code	Amount	Code	Amount	Code	Amount	Code	Amount	Total	Check #
2/5/2026	Chase Card Services	STC	\$ 6,617.96							\$ 6,617.96	NBAZ
2/5/2026	Payroll 06	SPS	\$ 17,522.38							\$ 17,522.38	NBAZ
2/6/2026	Payroll 06	SPS	\$ 1,452.76							\$ 1,452.76	1125
2/13/2026	ADP	7103	\$ 115.34							\$ 115.34	NBAZ
2/13/2026	Payroll 08	SPS	\$ 141.68							\$ 141.68	1126
2/18/2026	Dany Schwartz	6402	\$ 68.78							\$ 68.78	1127
2/18/2026	Steven Cranford	6404	\$ 36.71							\$ 36.71	1128
2/18/2026	Amy Holder	6404	\$ 34.78							\$ 34.78	1129
2/18/2026	Phil Lobeck	6402	\$ 689.01							\$ 689.01	1130
2/18/2026	Daniel Schwoegler	7101	\$ 66.30							\$ 66.30	1131
2/18/2026	APS	6100	\$ 441.92							\$ 441.92	NBAZBP
2/18/2026	Bingham	6404	\$ 2,955.76							\$ 2,955.76	NBAZBP
2/18/2026	Flagstaff Connection	6303	\$ 60.00							\$ 60.00	NBAZBP
2/18/2026	Global Med Respns	6300	\$ 162.24							\$ 162.24	NBAZBP
2/18/2026	JVG	7105	\$ 1,800.00							\$ 1,800.00	NBAZBP
2/18/2026	Life Assist	6100	\$ 263.38							\$ 263.38	NBAZBP
2/18/2026	Mountain Aire	6200	\$ 1,687.81							\$ 1,687.81	NBAZBP
2/18/2026	Outlaw Septic	7103	\$ 120.75							\$ 120.75	NBAZBP
2/18/2026	Power Hawk	8100	\$ 6,067.50							\$ 6,067.50	NBAZBP
2/18/2026	R&R Auto & Truck	6404	\$ 211.47							\$ 211.47	NBAZBP
2/18/2026	Ray Palmer	6202	\$ 150.00							\$ 150.00	1131
2/18/2026	Streamline	6303	\$ 189.00							\$ 189.00	NBAZBP
2/18/2026	Tire Pros	6404	\$ 132.49							\$ 132.49	NBAZBP
2/18/2026	Verizon	6100	\$ 256.68							\$ 256.68	NBAZBP
2/18/2026	VFIS	6100	\$ 5,453.00							\$ 5,453.00	NBAZBP
2/18/2026	Yarnell Hardware	6101	\$ 66.23							\$ 66.23	NBAZBP
2/18/2026	Funds Transfer	YCGF	\$ 22,000.00							\$ 22,000.00	1783
Month Total:										\$ 68,763.93	